

NetUpdate User's Manual



NetUpdate for Macintosh

© 1999 - 2001 Intego, Inc. All Rights Reserved

Intego, Inc.

6301 Collins Avenue

Suite 1806

Miami, FL 33141

www.intego.com

This manual was written for use with NetUpdate software for Macintosh. This manual and the NetUpdate software described in it are copyrighted, with all rights reserved. This manual and the NetUpdate software may not be copied, except as otherwise provided in your software license or as expressly permitted in writing by Intego, Inc.

The Software is owned by Intego and its suppliers, and its structure, organization and code are the valuable trade secrets of Intego and its suppliers. The Software is protected by United States Copyright Law and International Treaty provisions.



Contents

About NetUpdate	4
Using NetUpdate	4
Checking for Updates.....	4
Downloading Updates.....	5
Selecting NetUpdate Options.....	7
Technical Support	9



About NetUpdate

NetUpdate is an application that Intego's programs can use to check if updates are available. This application is installed at the same time as other Intego applications, and is installed in the Applications folder of your computer. It checks for updates of all Intego programs at the same time, and downloads and installs those for the programs installed on your computer.

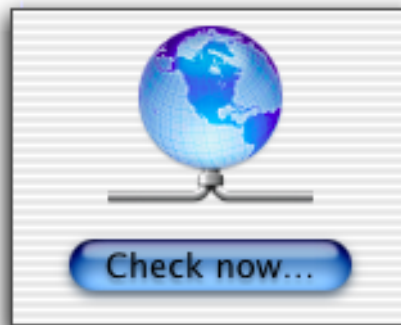
NetUpdate can carry out automatic checks, at the frequency you choose, or it can be used to make manual checks whenever you wish.

Using NetUpdate

NetUpdate can be used for either manual or automatic checks.

Checking for Updates

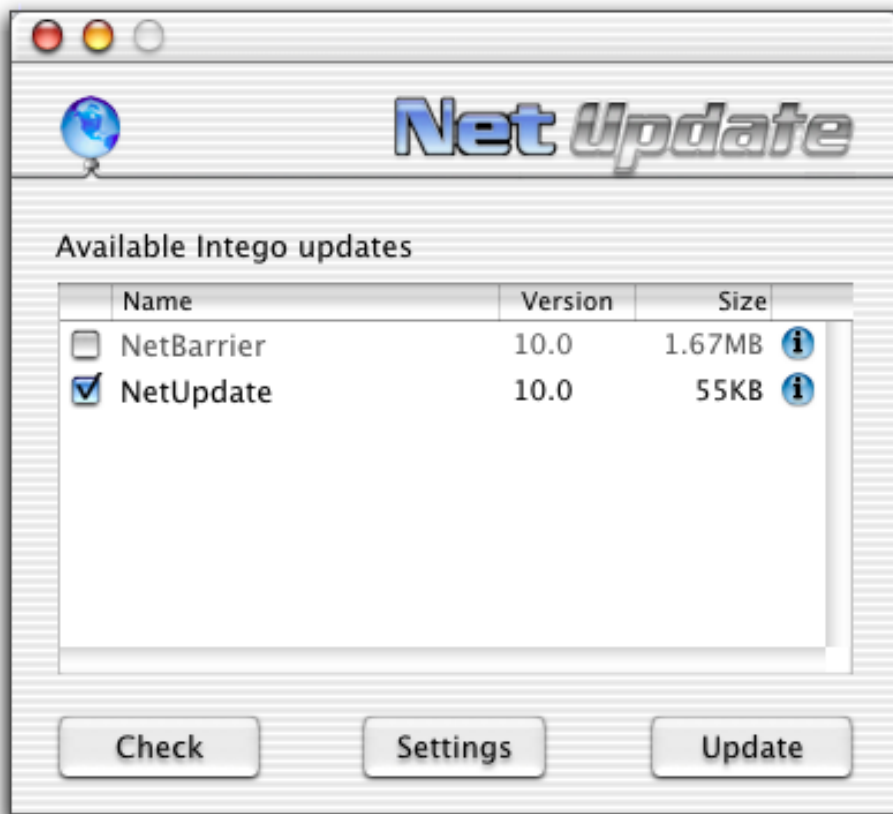
Each of Intego's programs contains a Check now... button either on the main interface or in its preferences. To check for updates, click this button.



To carry out a manual check right away, just click the Check now... button. The NetUpdate application will open and connect to Intego's server to determine whether you have the latest versions of any Intego programs you have installed on your computer. If there are new versions, you will be able to download them and the updates will install automatically.

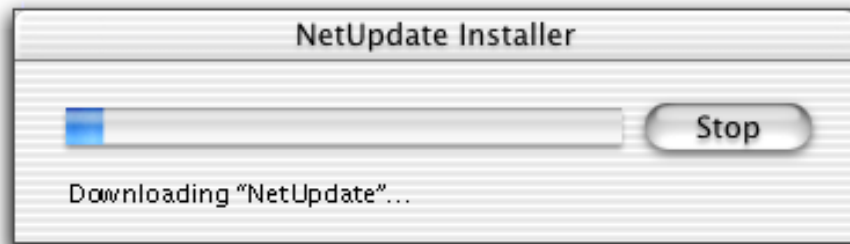
Downloading Updates

You will see a list of available updates. Select one of the Intego programs installed on your computer, by checking its check box, and click the Update button.



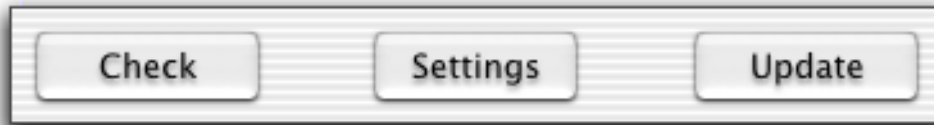
A dialog box will be displayed asking you for your administrator's password; only users with administrator's privileges can download updates with NetUpdate.

After the correct password has been entered, the selected updater(s) will be automatically downloaded to your computer, and will be installed as soon as downloading is completed.

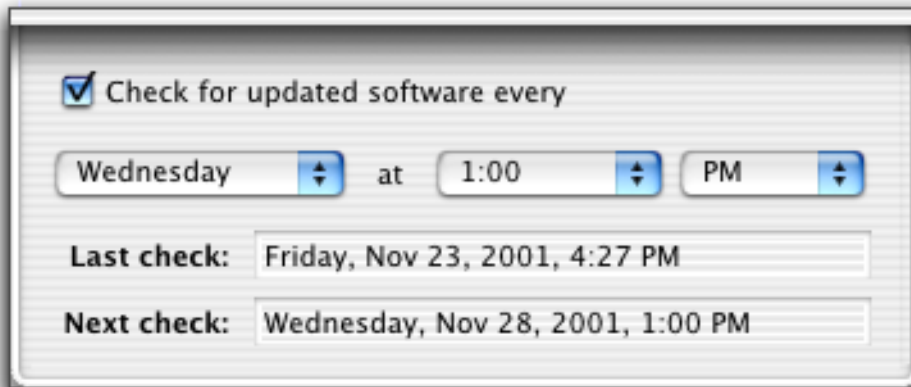


Selecting NetUpdate Options

Several options are available to configure NetUpdate. To set these options, open NetUpdate, in any of the ways presented above, and click the Settings button.



The Settings drawer will open.



Check for updated software every

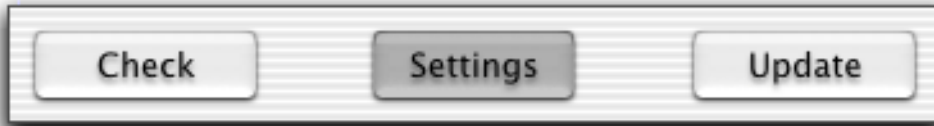
If you check this option, NetUpdate will automatically check for updates. When this occurs, the NetUpdate application will open and connect to the Intego ftp site to look for updates (if your selected Firewall mode is compatible with this). If you do not check this option, you can manually check for updates by clicking the Check now... button (see above). The next section allows you to choose at what

frequency the updates will occur. Choose a day of the week, and a time.

Last check and Next check

This shows the date and time of the last check made (either automatically or manually) and the next check, if updating is scheduled automatically.

After you have changed NetUpdate's settings, close the settings drawer by clicking the Settings button.



Technical Support

Technical support is available for registered purchasers of Intego products.

By e-mail

support@intego.com

From the Intego web site

www.intego.com

